

10 valuable benefits safety,

CERTIFICATION

& compliance adds to your site



Bend-tech.
ENGINEERED TOUGH

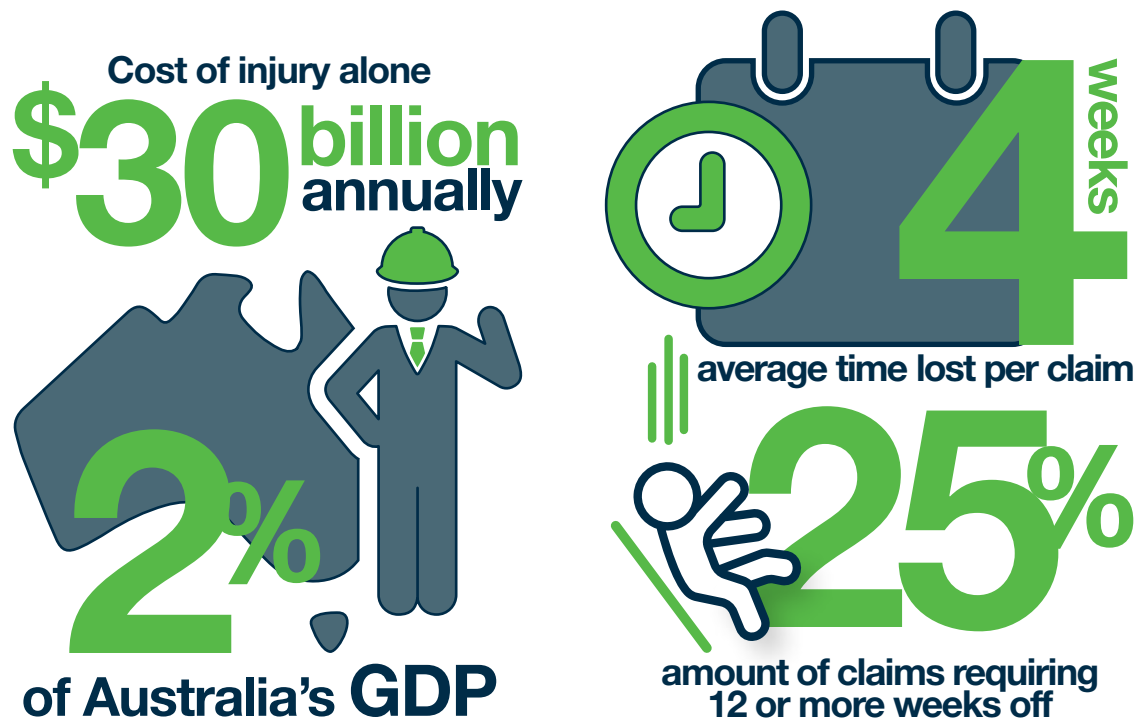
www.bendtechgroup.com.au



“Workplace safety is good for business”

Businesses that invest in better workplace safety measures mitigate the risks of workplace accidents which leads to improved profitability, staff morale and greater efficiency. Furthermore, businesses also have a legal and ethical responsibility to provide a safe place of work for all employees and contractors on site.

SafeWork Australia Injury Statistics



Safety and Associated Costs

Reports prepared for Safe Work Australia highlight the true cost of work related injuries. Time lost due to injury alone costs the economy \$30 billion, representing 2% of Australia's GDP. More than 50,000 of these injuries require at least 1 full week off work, while the average time lost per incident is 4 weeks. Alarming 25% of injuries result in the claimant needing 12 or more weeks away from work, representing a severe loss to productivity and profit.

Annually, injury costs Australian businesses huge amounts of money, the loss of time and productivity can severely impact an organisations success. Medical bills and compensation can run into the tens of thousands, not to mention the added cost of the interim replacement of the injured worker.

Ensuring a safe workplace can have tremendous effects on an organisations bottom line. Decreasing the rate of injury will improve productivity, boost staff morale, save money and transform profitability.

source: <https://www.safeworkaustralia.gov.au/statistics-and-research/cost-injury-and-illness-occupation>



MINING

Cost of injury

Incidents, accidents and injuries occur daily on mine-sites and the costs associated are enormous. In the Western Australian mining sector, there is an average of 3000 compensation claims per year, 38% of these require more than 60 days off work. This accounts for \$120 million dollars paid in compensation alone, the loss of time and productivity especially on a mine-site represents are far greater cost.

source: (<https://www.workcover.wa.gov.au/content/uploads/2017/06/20170622-Industry-Statistical-Report-Mining.pdf>)

High risk occupations

As expected; machinery operators, labourers as well as technicians and trade workers are the most commonly injured employees and contractors on-site. The nature of the work they complete as well as the environment they are exposed too and equipment they work with, dramatically increases their chances of injury.

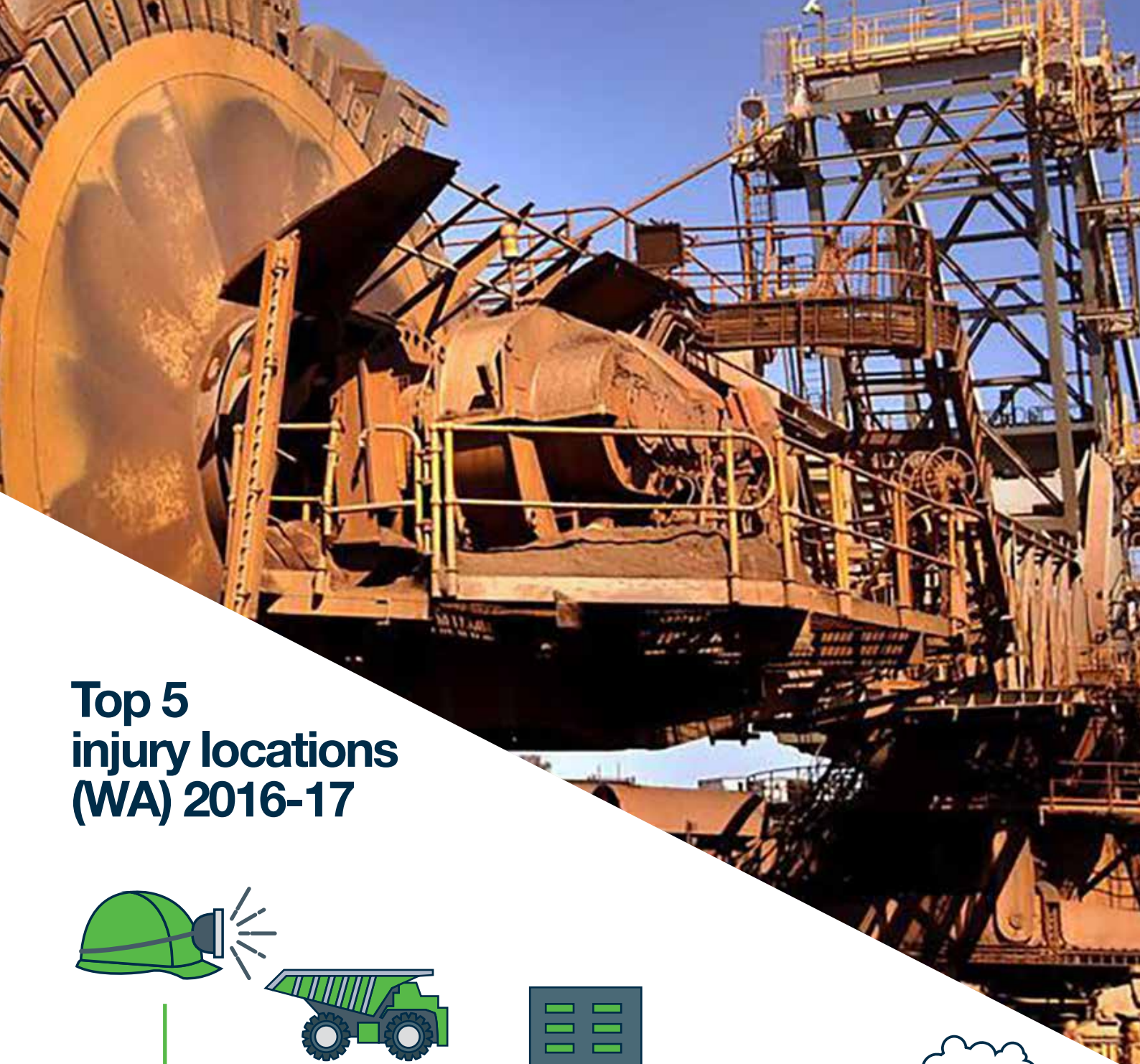
Employing the correct mitigation measures is incredibly important to ensure high risk positions, site operations as well as equipment and processes are kept to a high safety standard. This will decrease the number of incidents and safety hazards, dramatically improve productivity and the amount lost due to injury.

source: https://www.commerce.wa.gov.au/sites/default/files/atoms/files/01_mining_2017.pdf

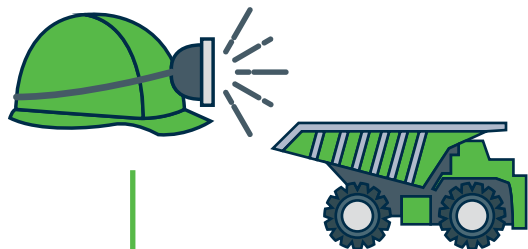
FATALITIES

In the five years between 2007 and 2012, 36 mine workers died from work related injuries. Workplace accidents can be extremely serious, debilitating or even fatal, the importance of improving safety is obvious.

“ **Compliance certifies quality, performance and safety outcomes** ”



Top 5 injury locations (WA) 2016-17



12%

Underground production & development



13%

Surface General



14%

Workshop



18%

Open Pit



39%

Treatment Plant

source: http://www.dmp.wa.gov.au/Documents/Safety/MSH_Stats_Reports_SafetyPerfWA_2016-17.pdf

Safety and Health Snapshot 2016-18

Line-of-fire

253 notable incidents

83% classified as serious

11% occurred in the processing plant

Don't get caught in the line of fire

- Never stand under anything that can fall on you
- Keep hands and body parts away from areas where they can be crushed
- Never start work if there is a risk an object could strike you or a colleague
- Employ safe, certified equipment

Integrity of structures

68 notable incidents

13% classified as serious

22% were related to fixed plant operations

Suspended load safety

- Only use structures for their intended purpose unless designed, engineered modifications have been made and certified
- Carry out annual structural checks and inspections and produce detailed reports on required repairs and improvements
- Carry out structural design audits to ensure all steel components on-site are not overstressed
- Ensure any steel and supporting structures comply with the relevant Australian Standard

Suspended loads

52 notable incidents

21% classified as serious

48% occurred during maintenance

Reduce the risk

- Never walk or work under a suspended load
- Thoroughly check all rigging parts and components
- Think safety and only complete jobs which meet the safety criteria
- Understand line of fire scenarios and plan accordingly
- Understand the stored energy hazards associated with the work being conducted
- Always ensure equipment and processes are certified and compliant with Australian Standards

Hazardous manual tasks

355 musculoskeletal disorders

81% classified as serious

40% of back injuries occurred during production

31% of shoulder injuries occurred during ore treatment

Handling hazardous manual tasks

- Ensure safe design, identify and assess all risks
- Use the correct methods and procedures
- Identify mechanical assistance options

making sites safer

Certification and Australian Standards

The environment, procedures conducted, and inherent risks means the products and equipment being used must be compliant with Australian Standards®. Compliant products are put to the test before the operator has too, ensuring they will outperform the intended use and provide the safety outcomes required. Compliant products are simply higher quality; designed, engineered and constructed for safe, long lasting, hard wearing and productive application.

STANDARDS

What is a standard?

Standards are voluntary documents that outline specifications, procedures and guidelines. They are aimed at ensuring products, systems and services are reliable, safe and consistent. Standards cover a variety of subjects and industries, including consumer products and services, the environment, construction, manufacturing, energy, water and more.

Standards are regularly audited and reviewed by the Standards Australia board to ensure they are applicable with current practice and are up to date with new technologies and advancements.

Standards and the Law

Standards are, on their own, voluntary, however they are often referred to in legislation, when this occurs they come a mandatory benchmark of acceptability. Products that do not comply can be considered inferior as they have not passed the certification and testing required of an Australian Standard® compliant product.

How are products certified to comply?

An independent certification and testing body must be employed to carry out the testing and compliance process. The Joint Accreditation System of Australia and New Zealand (JAS-ANZ) houses a list of accredited agencies whom are able to certify products. Once the designation number has been identified for the standard in which the product aims to comply, the rigors of the certification process can begin, only products that satisfy all of the requirements receive certification.

“ A mandatory benchmark of acceptability ”

10 valuable benefits safety, certification & compliance adds to your site

1. Certification plates

Certified parts, components and products will always display a certification plate of compliance. Indicating that the item has been tested and will provide the structural, load bearing, or performance measures promised.

Always check for certification plates to ensure the product being used is engineered for its intended purpose and will provide a safe and productive solution.



2. Products that perform

Products that comply with Australian Standards® offer a significant added value. Standards ensure the product is designed and engineered to safely perform their intended purpose. They have been tested under the various strains and stressors associated with the application, certifying they are over specified for purpose.

3. Eliminate scaffold

The scaffold elimination process involves scoping and inspecting erected scaffold or an area that usually requires scaffold to access, protect or provide support. The need for scaffold in a mobile or fixed plant application can be removed and certified and compliant temporary or fixed solution can be provided.

Risks of using scaffold

- Non-company personnel required on-site to erect and breakdown the scaffold
- Scaffolding needs to be highly regulated and inspected and is often not
- Scaffolding is often left in place for extended periods due to lack of permanent access, creating a safety hazard
- Scaffolding is not a form of permanent access or support

Certified access and scaffold replacement platforms solve all of the problems and costs associated with scaffold. Providing permanent, structurally sound compliant access or support to an area, removing the need for constant install and breakdown of scaffold, saving huge amounts of money in the long term.



4. Trestles and stands certified for performance

Trestles and work stands are often treated as a 'one-size fits all' which has the potential to be very dangerous and put lives at risk. Certified trestles and stands are engineered for specific capabilities and styles of load bearing, ensuring the equipment is safe and will perform the designated application.

Trestle and stand safety problems

- No certification – overloaded, incorrect load bearing
- Poor design
- Use of un-certified trestles and stands
- Different equipment requires different styles of trestles and stands

Fully certified and compliant trestles and stands are engineered for the weight, size and piece of equipment or configuration. Safety should be the number one consideration when load bearing such large, heavy assets.



5. Compliant racking and storage solutions

Non-compliant racking, storage or methods of storage create significant safety risks on-site, putting workers in danger of being crushed or struck by falling materials. Un-certified racking or storage equipment could be overloaded or under-engineered for its purpose, creating a serious hazard.

Storage safety problems

- No certification – overloaded, under-engineered storage
- Bad racking configurations and storage efficiency
- No racking or storage equipment at all – stock stored on the ground
- Different materials require different racks

Racking and storage equipment that is certified and compliant, provides safe, efficient, material-centric storage. Consultations and assessments of site requirements will ensure the rack designed or provided fits the purpose, ensuring safe, productive, long lasting solutions.



“ Proudly Australian
Designed, Owned &
Manufactured ”



6. Transform access and inspection doors

Access and inspection situations are inherently dangerous, several incidents involving the access of chutes and conveyors have resulted in near fatalities. Production can also be seriously impacted when using conventional access and inspection doors or non-compliant solutions, due to complete shut-downs for maintenance.

Three door systems provide a safe, production minded solution to access and inspection requirements. Openings can be safely inspected as the 'jail bar door' prevents operators from falling inside the chute. Once safe, the door can be fully opened, and access is granted for maintenance and inspection.

7. A boost in confidence

Safety and compliance standards provide businesses and consumers with the confidence that the products and services they buy, or implement are safe, reliable and fit-for-purpose. Ensuring performance under the toughest environments and situations, compliant products provide the performance and safety measures consumers need.

8. Enhance innovation

Safety and compliance standards provide the ability to certify new ideas and custom equipment. They can be created, evolved or discarded to keep up with the changing environment. New standards are developed that reflect the latest technologies, innovations and consumer needs.

9. Reduce the red tape

Safety and compliance standards harmonise across Australia's laws and regulations. They offer an alternative to regulation, reducing business costs and limiting red tape, while still providing security and enhanced safety for operators.

10. Help business thrive

Safety and compliance standards are central to Australian business, safety and performance. They mitigate risks and provide products that drive performance. Certified, compliant products are high quality giving the consumer the solution and peace of mind they need.

source: <https://www.standards.org.au>



Bend-tech Engineered Safety and Compliance

Bend-tech products are all engineered, certified and compliant with Australian Standards®. Providing market leading safety and productivity is the aim of every product that we manufacture. The use of unsafe, uncertified, non-compliant products creates a huge range of risks and associated costs for our customers. We ensure that our customers and the operators using our equipment have the peace of mind to conduct their duties and clock off at the end of the day.

We take those extra steps to manufacture high performance products that out-perform and out last the rest. We strive to innovate and constantly improve our offerings, placing us in a market leading position in long lasting quality, safety and performance outcomes.



“ **Global industry leaders
in mining and engineering
solution innovation and
development** ”

about **US**

We deliver sustained value by providing cutting-edge solutions through collaboration and innovation. For more than 30 years we have delivered intelligent design and custom-certified products and services to the Mining, Fabrication, Marine and Oil and Gas industries across Australia and around the world. We have achieved this through a deep understanding of our customers and their requirements as well as innovative and industry leading design, engineering and construction.

Bendtech.
ENGINEERED TOUGH

PERTH 08 9459 8600

SYDNEY 02 9764 6607

BRISBANE 07 3117 3780

KALGOORLIE 08 9021 8300

NEWMAN 08 9175 1164

MOUNT ISA 07 4743 6458

sales@bendtechgroup.com.au

www.bendtechgroup.com.au